

# KINTEK

**POLYGONAL TOOLHOLDERS DIN ISO 26623-1**  
**MANDRINI ATTACCO POLIGONALE**



**POLYGONAL TOOLHOLDERS**  
**DIN ISO 26623-1**



WERKZEUGHALTER  
DIN ISO 26623-1



ОПРАВКИ С ПОЛИГОНАЛЬНЫМ  
ХВОСТОВИКОМ



PORTE-OUTILS  
ATTACHEMENT POLYGONALE



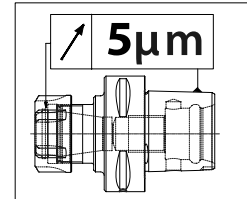
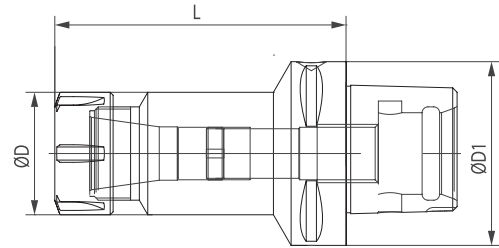
MANDRINI  
ATTACCO POLIGONALE



多边形刀柄 DIN ISO 26623-1



SPANNZANGENFUTTER MIT POLYGONSCHAFT POLYGONAL ER COLLET CHUCK  
 ЦАНГОВЫЕ ПАТРОНЫ С ПОЛИГОНАЛЬНЫМ ХВОСТОВИКОМ  
 PORTE-PINCES AVEC ATTACHEMENT POLYGALE  
 PORTAPINZE TIPO ER CON ATTACCO POLIGONALE  
 多边形ER筒夹



Code N.	Attacco Shank	per pinza for collet	D1 mm	D mm	L mm	G6,3 8000
C40H70ER16	C40	ER16	40	32	70	•
C40H52ER25	C40	ER25	40	42	52	•
C40H54ER32	C40	ER32	40	50	54	•
C50H60ER16	C50	ER16	50	32	60	•
C50H60ER20	C50	ER20	50	35	60	•
C50H60ER25	C50	ER25	50	42	60	•
C50H60ER32	C50	ER32	50	50	60	•
C50H65ER40	C50	ER40	50	63	65	•
C50H100ER16	C50	ER16	50	32	100	•
C50H100ER25	C50	ER25	50	42	100	•
C50H100ER32	C50	ER32	50	50	100	•
C50H100ER40	C50	ER40	50	63	100	•
C63H60ER16	C63	ER16	63	32	60	•
C63H60ER20	C63	ER20	63	35	60	•
C63H60ER25	C63	ER 25	63	42	60	•
C63H60ER32	C63	ER 32	63	50	60	•
C63H70ER40	C63	ER40	63	63	70	•
C63H100ER16	C63	ER 16	63	32	100	•
C63H100ER20	C63	ER20	63	35	100	•
C63H100ER25	C63	ER 25	63	42	100	•
C63H100ER32	C63	ER 32	63	50	100	•
C63H130ER40	C63	ER 40	63	63	130	•
C80H70ER25	C80	ER25	80	42	70	•
C80H70ER32	C80	ER32	80	50	70	•
C80H70ER40	C80	ER40	80	63	70	•
<b>MINI NUT VERSION</b>						
C63H100ER16M	C63	ER16	63	22	100	•

Ersatzteile • Spare parts • Pièces détachées • Componenti • Запасные части • 零件

ER	Nut	Stop screw
16M	812-203013	811-303119
16	812-203005	811-303119
20	812-203006	811-303120
25	812-203001	811-303121
32	812-203002	811-303118
40	812-203003	811-303122

Zubehör  
 Accessories  
 Accessoires  
 Accessori  
 Принадлежности  
 零件



SPANNFUTTERSATZ    JEUX PORTE-PINCES  
COLLET CHUCK KITS    KIT PORTAPINZE  
НАБОРЫ ОПРАВОК С ЦАНГАМИ    夹头变径套组套

Ausstattungskasten: 1 Spannzangenfutter + 10 Spannzangen + Spannschlüssel

Kit Box: 1 Collet chuck + 10 Collets + Wrench

Набор из цангового патрона и цанг

Boite d'équipement: 1 Porte-pince + 10 pinces + Clé de serrage

Cassetta corredo: 1 Portapinze + 10 pinze + chiave

套装: 1刀柄 + 10 夹头 + 1扳手

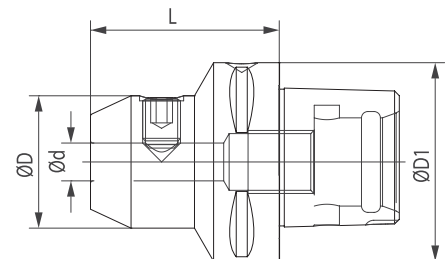


CODE N°	DESCRIPTION
<b>KITC50H60ER16</b>	C50H60ER16+10 collets (ER16d.1-2-3-4-5-6-7-8-9-10) + wrench
<b>KITC50H60ER25</b>	C50H60ER25+10 collets (ER25d.2-3-4-5-6-8-10-12-14-16) + wrench
<b>KITC50H60ER32</b>	C50H60ER32+10 collets (ER32d.3-4-6-8-10-12-14-16-18-20) + wrench
<b>KITC50H100ER16</b>	C50H100ER16+10 collets (ER16d.1-2-3-4-5-6-7-8-9-10) + wrench
<b>KITC50H100ER25</b>	C50H100ER25+10 collets (ER25d.2-3-4-5-6-8-10-12-14-16) + wrench
<b>KITC50H100ER32</b>	C50H100ER32+10 collets (ER32d.3-4-6-8-10-12-14-16-18-20) + wrench
<b>KITC63H60ER16</b>	C63H60ER16+10 collets (ER16d.1-2-3-4-5-6-7-8-9-10) + wrench
<b>KITC63H60ER25</b>	C63H60ER25+10 collets (ER25d.2-3-4-5-6-8-10-12-14-16) + wrench
<b>KITC63H60ER32</b>	C63H60ER32+10 collets (ER32d.3-4-6-8-10-12-14-16-18-20) + wrench
<b>KITC63H100ER16</b>	C63H100ER16+10 collets (ER16d.1-2-3-4-5-6-7-8-9-10) + wrench
<b>KITC63H100ER25</b>	C63H100ER25+10 collets (ER25d.2-3-4-5-6-8-10-12-14-16) + wrench
<b>KITC63H100ER32</b>	C63H100ER32+10 collets (ER32d.3-4-6-8-10-12-14-16-18-20) + wrench

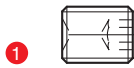
WELDON SPANNFUTTER MIT POLYGONSCHAFT  
 POLYGONAL END MILL HOLDER WELDON  
 ПАТРОНЫ EPS ДЛЯ КОНЦЕВЫХ ФРЕЗ С ХВОСТОВИКОМ WELDON

PORTE-FRAISES WELDON AVEC ATTACHEMENT POLYGOALE  
 PORTAFRESE WELDON CON ATTACCO POLIGONALE  
 多边形威尔登式铣刀柄

Code N.	Attacco Shank	D1 mm	D mm	d mm	L mm	G6,3 8000
C40H50WE06	C40	40	25	6	50	•
C40H50WE08	C40	40	28	8	50	•
C40H50WE10	C40	40	35	10	50	•
C40H55WE12	C40	40	42	12	55	•
C40H55WE14	C40	40	44	14	55	•
C40H55WE16	C40	40	48	16	55	•
C50H55WE06	C50	50	25	6	55	•
C50H55WE08	C50	50	28	8	55	•
C50H65WE10	C50	50	35	10	65	•
C50H65WE12	C50	50	42	12	65	•
C50H65WE14	C50	50	42	14	65	•
C50H65WE16	C50	50	48	16	65	•
C50H65WE18	C50	50	48	18	65	•
C50H65WE20	C50	50	52	20	65	•
C50H80WE25	C50	50	65	25	80	•
C63H55WE06	C63	63	25	6	55	•
C63H55WE08	C63	63	28	8	55	•
C63H60WE10	C63	63	35	10	60	•
C63H60WE12	C63	63	42	12	60	•
C63H60WE14	C63	63	44	14	60	•
C63H65WE16	C63	63	48	16	65	•
C63H65WE20	C63	63	52	20	65	•
C63H80WE25	C63	63	64	25	80	•
C63H90WE32	C63	63	72	32	90	•
C80H70WE06	C80	80	25	6	70	•
C80H70WE08	C80	80	28	8	70	•
C80H70WE10	C80	80	35	10	70	•
C80H70WE12	C80	80	42	12	70	•
C80H70WE14	C80	80	44	14	70	•
C80H70WE16	C80	80	48	16	70	•
C80H70WE20	C80	80	50	20	70	•
C80H80WE25	C80	80	52	25	80	•
C80H80WE32	C80	80	72	32	80	•
C80H110WE40	C80	80	80	40	110	•

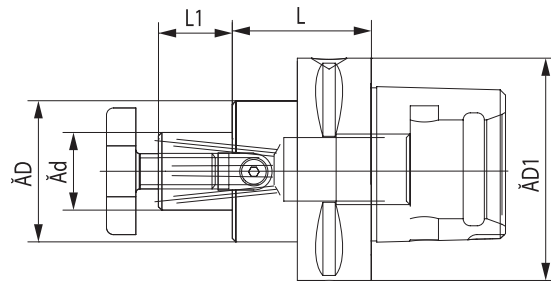


Ersatzteile • Spare parts • Pièces détachées • Componenti • Запасные части • 零件

d	Locking screw	Quantity
		
6	811-106001	1
8	811-106002	1
10	811-106004	1
12;14	811-106005	1
16;18	811-106006	1
20	811-106007	1
25	811-106008	2
32;40	811-106009	2



AUFSTECKFRÄSDORNE MIT POLYGONSCHAFT  
 POLYGONAL FACE MILL HOLDER  
 ПАТРОНЫ С ПОЛИГОНАЛЬНЫМ ХВОСТОВИКОМ ДЛЯ НАСАДНЫХ ФРЕЗ  
 PORTE-FRAISES AVEC ATTACHEMENT POLYGONALE  
 PORTAFRESE A TRASCINAMENTO FISSO CON ATTACCO POLIGONALE  
 多边形端面铣刀柄

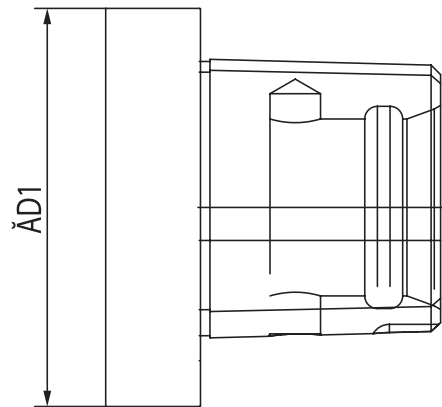


Code N.	Attacco Shank	D1 mm	D mm	d mm	L mm	L1 mm		G6,3 8000
C40H32D16	C40	40	32	16	32	17	B	•
C40H25D22	C40	40	40	22	25	19	B	•
C50H60D16	C50	50	38	16	60	17	A	•
C50H60D22	C50	50	48	22	60	19	A	•
C50H60D27	C50	50	58	27	60	21	A	•
C50H60D32	C50	50	63	32	60	24	B	•
C63H40D16	C63	63	32	16	40	17	B	•
C63H63D16	C63	63	38	16	63	17	A	•
C63H25D22	C63	63	55	22	25	19	A	•
C63H100D22	C63	63	48	22	100	19	A	•
C63H25D27	C63	63	63	27	25	21	A	•
C63H100D27	C63	63	58	27	100	21	A	•
C63H25D32	C63	63	63	32	25	24	B	•
C63H100D32	C63	63	63	32	100	24	B	•
C63H40D40	C63	63	89	40	40	27	A	•
C63H100D40	C63	63	70	40	100	27	B	•
C80H50D16	C80	80	32	16	50	17	B	•
C80H30D22	C80	80	55	22	30	19	B	•
C80H30D27	C80	80	65	27	30	21	A	•
C80H30D32	C80	80	79	32	30	24	A	•
C80H30D40	C80	80	80	40	30	27	B	•

Ersatzteile • Spare parts • Pièces détachées • Componenti • Запасные части • 零件

d	Cross screw	Cross screw on enquiry	Dog A	Screw A	Dog B	Screw B
16	811-107003	811-107013	814-202280	811-101004	814-20214	811-101002
22	811-107004	811-107014	814-202250	811-101011	814-20215	811-101010
27	811-107005	811-107015	814-202270	811-101018	814-20216	811-101017
32	811-107006	811-107016	814-202630	811-101029	814-20217	811-101027
40	811-107007	811-107017	814-202710	811-101029	814-20218	811-101028

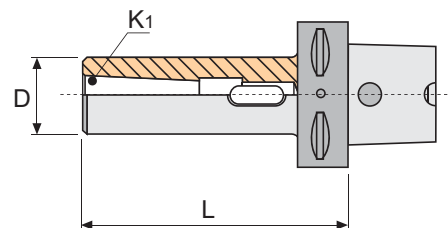
**VERSCHLUßDECKEL**    **BOUCHON DE PROTECTION**  
**BLANKING PLUG**      **TAPPO DI PROTEZIONE**  
**ЗАГЛУШКИ**            **切断栓**



Code N.	D1
C40-TP	40
C50-TP	50
C63-TP	63

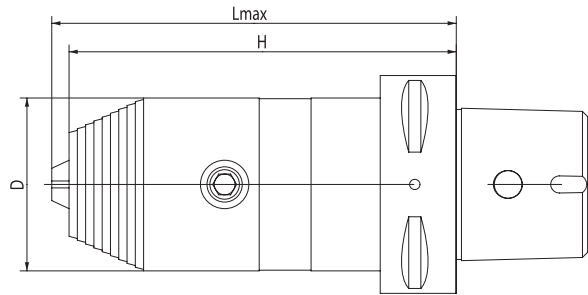
**ZWISCHENHÜLSEN FÜR MORSEKEGEL**  
**MIT AUSTREIBBLAPPEN ODER ANZUGSGEWINDE**  
**POLYGONAL MORSE TAPER ADAPTORS FOR DRILLS**  
**ОПРАВКИ ДЛЯ КОНУСОВ МОРЗЕ С ЛАПКОЙ И С РЕЗЬБОЙ**

**DOUILLES POUR CONE MORSE A TENON ET AVEC TARAUDAGE**  
**MANDRINI PORTAPUNTE ATTACCO CONO MORSE**  
**CON ATTACCO POLIGONALE**  
**莫氏锥度钻接头**



Code N.	Attacco Shank	D1 mm	A mm	L mm	G6,3 8000
C50H110CM2P	C50	32	MK2	110	•
C50H130CM3P	C50	40	MK3	130	•
C63H110CM2P	C63	32	MK2	110	•
C63H130CM3P	C63	40	MK3	130	•
C63H150CM4P	C63	52	MK4	150	•

NC-BOHRFUTTER    MANDRINS UNIVERSELS DE PERCAGE  
 UNIVERSAL DRILL CHUCKS    MANDRINI PORTAPUNTE INTEGRALI  
 УНИВЕРСАЛЬНЫЕ СВЕРЛИЛЬНЫЕ ПАТРОНЫ    万能钻夹头



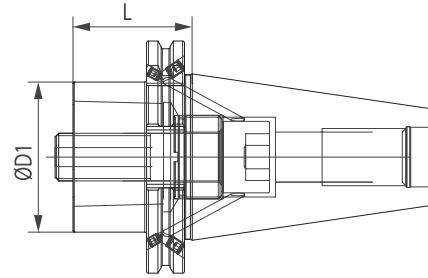
Code N.	Attacco shank	H	D	Lmax	Clamping capacity
C32H96R1-13	C32	96	50	103	0,5-13
C40H98R1-13	C40	98	50	105	0,5-13
C50H97R1-13	C50	97	50	105	0,5-13
C63H112R1-13	C63	112	50	118	0,5-13
C63H117R3-16	C63	117	57	123	2,5-16
C80H106R1-13	C80	106	50	112	0,5-13
C80H111R3-16	C80	111	57	115	2,5-16



REDUKTION SK 40/50 DIN69871 MIT POLYGONSCHAFT  
 REDUCTION ISO 40/50 DIN69871-AD/B - POLYGONAL SHANK  
 ПЕРЕХОДНИКИ С ISO 40/50 DIN69871-AD/B НА EPS

REDUCTION ISO 40/50 DIN69871 AVEC ATTACHEMENT POLYGONALE  
 RIDUZIONE ISO 40/50 DIN 69871-AD/B PER ATTACCO POLIGONALE  
 DIN69871-AD/B 多边形缩减柄

**DIN 69871**

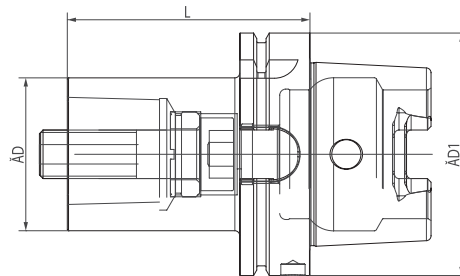


Code N.	Attacco Shank	D1 mm	L mm
TC40H30C40ADB	40DIN69871 AD/B	40	30
TC40H60C40ADB	40DIN69871 AD/B	40	60
TC40H40C50ADB	40DIN69871 AD/B	50	40
TC40H85C63ADB	40DIN69871 AD/B	63	85
TC50H30C40ADB	50DIN69871 AD/B	40	30
TC50H60C40ADB	50DIN69871 AD/B	40	60
TC50H30C50ADB	50DIN69871 AD/B	50	30
TC50H70C50ADB	50DIN69871 AD/B	50	70
TC50H110C50ADB	50DIN69871 AD/B	50	110
TC50H30C63ADB	50DIN69871 AD/B	63	30
TC50H50C63ADB	50DIN69871 AD/B	63	50
TC50H80C63ADB	50DIN69871 AD/B	63	80
TC50H70C80ADB	50DIN69871 AD/B	80	70
TC50H120C80ADB	50DIN69871 AD/B	80	120

REDUKTION HSK MIT POLYGONSCHAFT  
 REDUCTION HSK POLYGONAL SHANK  
 ПЕРЕХОДНИКИ HSK НА EPS

REDUCTION HSK AVEC ATTACHEMENT POLYGONALE  
 RIDUZIONE HSK PER ATTACCO POLIGONALE  
 HSK 多边形缩减柄

**DIN 69893/A**

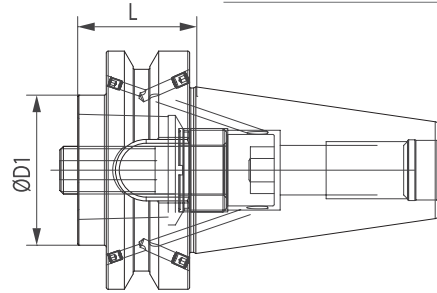


Code N.	Attacco Shank	D mm	D1 mm	L mm
HSK63AH63C32	DIN69893 HSK63	32	63	63
HSK63AH80C40	DIN69893 HSK63	40	63	80
HSK63AH90C50	DIN69893 HSK63	50	63	90
HSK63AH110C63	DIN69893 HSK63	63	63	110
HSK100AH90C40	DIN69893 HSK100	40	100	90
HSK100AH100C50	DIN69893 HSK100	50	100	100
HSK100AH90C63	DIN69893 HSK100	63	100	90
HSK100AH150C63	DIN69893 HSK100	63	100	150
HSK100AH120C80	DIN69893 HSK100	80	100	120

REDUKTION BT40/50-AD/B MIT POLYGONSCHAFT  
 REDUCTION BT40/50-AD/B - POLYGONAL SHANK  
 ПЕРЕХОДНИКИ С BT40/50-AD/B НА DIN

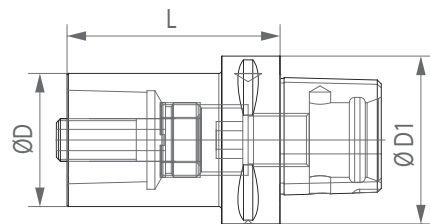
REDUCTION BT40/50-AD/B AVEC ATTACHEMENT POLYGONALE  
 RIDUZIONE BT40/50-AD/B CON ATTACCO POLIGONALE  
 BT40/50-AD/B多边形缩减柄

JIS-B 6339 MAS 403/BT



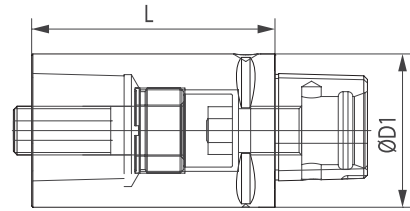
Code N.	Attacco Shank	D1 mm	L mm
BT40H60C32ADB	40MAS403BT AD/B	32	60
BT40H30C40ADB	40MAS403BT AD/B	40	30
BT40H60C40ADB	40MAS403BT AD/B	40	60
BT40H50C50ADB	40MAS403BT AD/B	50	50
BT40H90C50ADB	40MAS403BT AD/B	50	90
BT40H75C63ADB	40MAS403BT AD/B	63	75
BT50H40C40ADB	50MAS403BT AD/B	40	40
BT50H70C40ADB	50MAS403BT AD/B	40	70
BT50H40C50ADB	50MAS403BT AD/B	50	40
BT50H80C50ADB	50MAS403BT AD/B	50	80
BT50H50C63ADB	50MAS403BT AD/B	63	50
BT50H90C63ADB	50MAS403BT AD/B	63	90
BT50H70C80ADB	50MAS403BT AD/B	80	70
BT50H120C80ADB	50MAS403BT AD/B	80	120

POLYGONSCHAFT-REDUKTION  
 POLYGONAL REDUCTION  
 ПЕРЕХОДНИКИ  
 REDUCTION AVEC ATTACHEMENT POLYGONALE  
 RIDUZIONE CON ATTACCO POLIGONALE  
 缩小 多边形柄



Code N.	Attacco Shank	D1	D	L
C40H55C32	C40	40	32	55
C50H65C40	C50	50	40	65
C50H85C40	C50	50	40	85
C63H80C40	C63	63	40	80
C63H80C50	C63	63	50	80
C80H120C50	C80	80	50	120
C80H80C63	C80	80	63	80

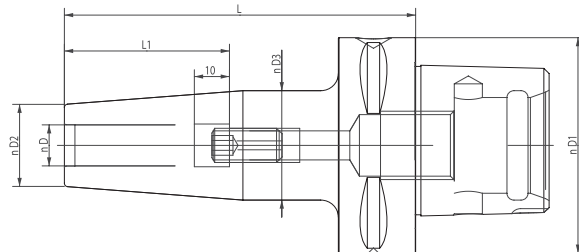
POLYGONSCHAFT-VERLÄNGERUNG RALLONGES AVEC ATTACHEMENT POLYGONALE  
 POLYGONAL EXTENSION PROLUNGA CON ATTACCO POLIGONALE  
 УДЛИНИТЕЛИ С ПОЛИГОНАЛЬНЫМ ХВОСТОВИКОМ 多边形延长杆



Code N.	Attacco Shank	D1 mm	L mm
C32H60C32	C32	32	60
C32H80C32	C32	32	80
C40H40C40*	C40	40	40
C40H60C40	C40	40	60
C40H80C40	C40	40	80
C50H50C50*	C50	50	50
C50H80C50	C50	50	80
C50H100C50	C50	50	100
C63H60C63*	C63	63	60
C63H100C63	C63	63	100
C63H140C63	C63	63	140
C80H65C80	C80	80	65
C80H100C80	C80	80	100
C80H125C80	C80	80	125

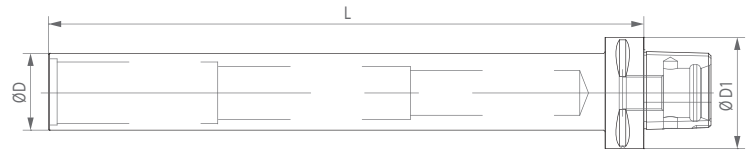
\* Not possible to use together with basic holder using centre bolt clamping

POLYGONHALTER · SCHRUMPFUTTER MANDRINS DE FRETTAGE - POLYGONAL  
 SHRINK FIT TOOL WITH POLYGONAL ATTACHMENT MANDRINO A CALETTAMENTO CON ATTACCO POLIGONALE  
 ТЕРМОЗАЖИМНЫЕ ПАТРОНЫ С ПОЛИГОНАЛЬНЫМ ХВОСТОВИКОМ 多边形热缩刀柄



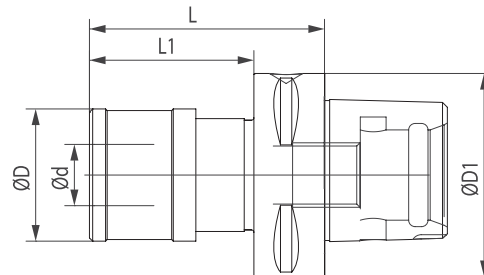
Code N.	Attacco Shank	D	D1	D2	D3	L	L1
C63H80K03-HTT	C63	3	63	10	17	80	12
C63H80K04-HTT	C63	4	63	10	17	80	16
C63H80K05-HTT	C63	5	63	10	17	80	20
C63H80K06-HTT	C63	6	63	21	27	80	36
C63H80K08-HTT	C63	8	63	21	27	80	36
C63H80K10-HTT	C63	10	63	24	32	80	42
C63H80K12-HTT	C63	12	63	24	32	80	47
C63H85K14-HTT	C63	14	63	27	34	85	47
C63H85K16-HTT	C63	16	63	27	34	85	50
C63H85K18-HTT	C63	18	63	33	42	85	50
C63H85K20-HTT	C63	20	63	33	42	85	52
C63H90K25-HTT	C63	25	63	44	53	90	58
C63H95K32-HTT	C63	32	63	44	53	95	58
C63H100K06-HTT	C63	6	63	21	27	100	36
C63H100K08-HTT	C63	8	63	21	27	100	36
C63H100K10-HTT	C63	10	63	24	32	100	42
C63H100K12-HTT	C63	12	63	24	32	100	47
C63H100K14-HTT	C63	14	63	27	34	100	47
C63H100K16-HTT	C63	16	63	27	34	100	50
C63H100K18-HTT	C63	18	63	33	42	100	50
C63H100K20-HTT	C63	20	63	33	42	100	52

PRÜFDORNE BARRES DE CONTROLE  
 CONTROL PINS BARRE DI CONTROLLO  
 КОНТРОЛЬНЫЕ ЦИЛИНДРЫ 测试棒



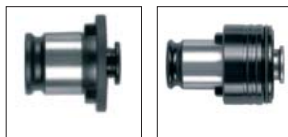
Code N.	Attacco Shank	D1	D	L
C40H300D35BC	C40	40	35	300
C50H300D40BC	C50	50	40	300
C63H160D35BC	C63	63	35	160
C63H346D40BC	C63	63	40	346
C80H346D40BC	C80	80	40	346

GEWINDESCHNEIDFUTTER MIT POLYGONSCHAFT MANDRIN DE TARAUDAGE AVEC ATTACHEMENT POLYGONALE  
 POLYGONAL TAPPING HEAD MASCHIATORE A CAMBIO RAPIDO CON ATTACCO POLIGONALE  
 РЕЗЬБОНАРЕЗНЫЕ ПАТРОНЫ DIN ДЛЯ МЕТЧИКОВ 多边形快换攻丝头

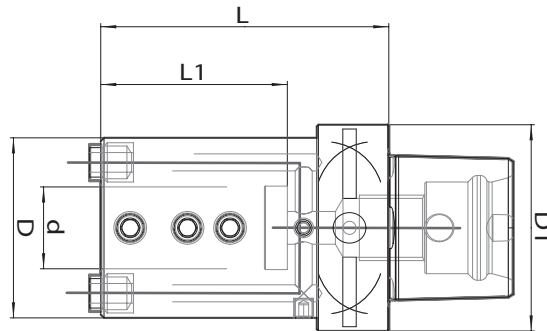


Code N.	Attacco Shank	D1 mm	D mm	d mm	L mm	L1 mm	Top range
C40GR1	C40	40	41	19	68	48	M3-M12
C40GR2	C40	40	60	31	91,5	68	M6-M20
C63GR1	C63	63	41	19	73	51	M3-M12
C63GR2	C63	63	60	31	97	75	M6-M20
C80GR1	C80	80	41	19	75	45	M3-M12
C80GR2	C80	80	60	31	93,5	63,5	M6-M20
C80GR3	C80	80	86	48	137	107	M14-M33

Zubehör  
 Accessories  
 Accessoires  
 Accessori  
 Принадлежности  
 零件



AXIAL BOHRSTANGENHALTER  
 AXIAL BORING BAR HOLDER  
 ДЕРЖАТЕЛИ ОСЕВЫЕ ДЛЯ РАСТОЧНЫХ РЕЗЦОВ  
 PORTE-OUTIL POUR BARRES D'ALEPAGE AXIAL  
 PORTAUTENSILE PER BARENI, ASSIALE  
 轴向镗杆刀柄



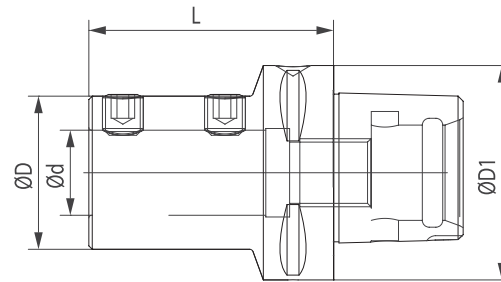
Code N.	Attacco Shank	D	D1	d	L	L1	Coolant noose
C40H65D12E2	C40	36	40	12	65	40	PWZ1008D8X06
C40H70D16E2	C40	40	40	16	70	42	PWZ1008D8X06
C40H70D20E2	C40	45	40	20	70	42	PWZ1008D8X06
C50H70D12E2	C50	40	50	12	70	40	PWZ1008D10X7
C50H80D16E2	C50	45	50	16	80	50	PWZ1008D10X7
C50H80D20E2	C50	50	50	20	80	50	PWZ1008D10X7
C50H80D25E2	C50	55	50	25	80	50	PWZ1008D10X7
C63H80D16E2	C63	45	63	16	80	50	PWZ1008D10X7
C63H80D20E2	C63	50	63	20	80	50	PWZ1008D10X7
C63H80D25E2	C63	55	63	25	88	57	PWZ1008D10X7
C63H95D32E2	C63	72	63	32	95	59	PWZ1008D12X8
C63H105D40E2	C63	80	63	40	105	72	PWZ1008D12X8
C80H85D16E2	C80	45	80	16	85	48	PWZ1008D10X7
C80H85D20E2	C80	50	80	20	85	48	PWZ1008D10X7
C80H85D25E2	C80	55	80	25	85	48	PWZ1008D10X7
C80H95D32E2	C80	72	80	32	95	58	PWZ1008D12X8
C80H110D40E2	C80	80	80	40	110	73	PWZ1008D12X8

Zubehör  
 Accessories  
 Accessoires  
 Accessori  
 Принадлежности  
 零件



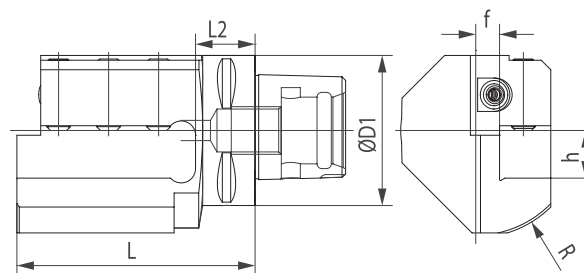
REDUZIERHÜLSEN MIT POLYGONSCHAFT  
POLYGONAL BORING BAR ADAPTER  
ПАТРОНЫ DIN ДЛЯ РАСТОЧНЫХ ДЕРЖАВОК

DOUILLES AVEC ATTACHEMENT POLYGONALE  
ADATTATORE PER PUNTE CON ATTACCO POLIGONALE  
多边形镗孔适配器



Code N.	Attacco Shank	D mm	D1 mm	d mm	L mm
C50H52D08PNT	C50	44	50	8	52
C50H52D10PNT	C50	44	50	10	52
C50H52D12PNT	C50	44	50	12	52
C50H65D16PNT	C50	44	50	16	65
C50H60D20PNT	C50	44	50	20	60
C50H70D25PNT	C50	44	50	25	70
C63H60D08PNT	C63	44	63	8	60
C63H60D10PNT	C63	44	63	10	60
C63H60D12PNT	C63	44	63	12	60
C63H70D16PNT	C63	36	63	16	70
C63H70D20PNT	C63	40	63	20	70
C63H72D25PNT	C63	45	63	25	72
C63H75D32PNT	C63	52	63	32	75
C63H85D40PNT	C63	63	63	40	85
C80H80D16PNT	C80	36	80	16	80
C80H80D20PNT	C80	40	80	20	80
C80H85D25PNT	C80	45	80	25	85
C80H90D32PNT	C80	52	80	32	90

90° DREHHALTER MIT POLYGONSCHAFT 90° POLYGONAL TOOLHOLDER  
ПАТРОНЫ DIN ДЛЯ ДЕРЖАВОК ДЛЯ НАРУЖНОГО ТОЧЕНИЯ 90 ГРАДУСОВ  
PORTE-OUTIL 90° AVEC ATTACHEMENT POLYGONALE PORTAUTENSILE 90° CON ATTACCO POLIGONALE  
90° 多边形刀柄

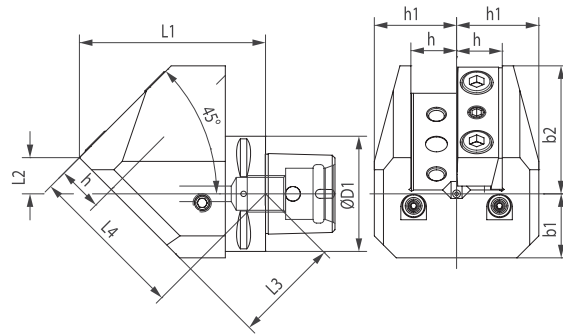


Code N.	Attacco Shank	D1 mm	L mm	h mm
C50-AD2020R/L	C50	50	98	20
C63-AD2020R/L	C63	63	100	20
C63-AD2525R/L	C63	63	130	25
C63-AD3232R/L	C63	63	134	32



45° DREHHALTER MIT POLYGONSCHAFT 45° POLYGONAL TOOLHOLDER  
 45° POLYGONAL TOOLHOLDER  
 ПАТРОНЫ DIN ДЛЯ ДЕРЖАВОК ДЛЯ НАРУЖНОГО ТОЧЕНИЯ 45 ГРАДУСОВ

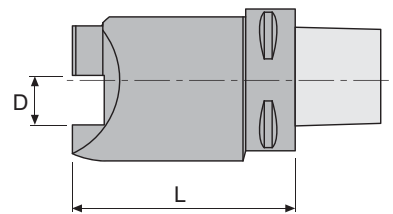
PORTE-OUTIL 45° AVEC ATTACHEMENT POLYGONALE  
 PORTAUTENSILE 45° CON ATTACCO POLIGONALE  
 45°多边形刀柄



Code N.	Attacco Shank	D1 mm	b1 mm	b2 mm	h mm	h1 mm	L1 mm	L2 mm	L3 mm	L4 mm
C63-ARD2525-45	C63	63	35	70	25	45	102	20	58	86

45° DREHHALTER MIT POLYGONSCHAFT 45° POLYGONAL TOOLHOLDER  
 45° POLYGONAL TOOLHOLDER  
 ПАТРОНЫ DIN ДЛЯ ДЕРЖАВОК ДЛЯ НАРУЖНОГО ТОЧЕНИЯ 45 ГРАДУСОВ

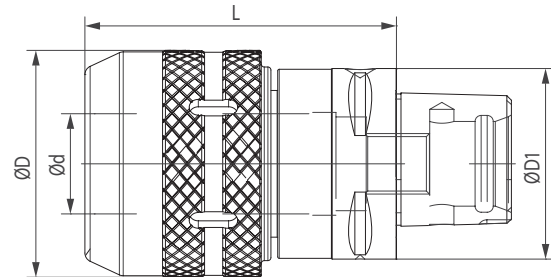
PORTE-OUTIL 45° AVEC ATTACHEMENT POLYGONALE  
 PORTAUTENSILE 45° CON ATTACCO POLIGONALE  
 45°多边形刀柄



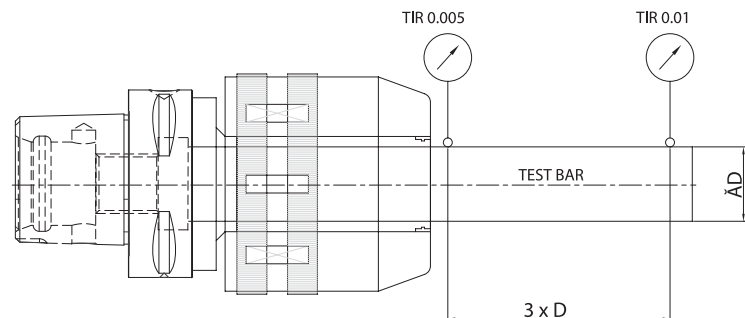
Code N.	Attacco Shank	D mm	L mm
C63AR20R/L	C63	20	100
C63AR25R/L	C63	25	130

KRAFTSPANNFUTTER MIT POLYGONSCHAF  
POLYGONAL MILLING CHUCK  
СИЛОВЫЕ ПАТРОНЫ

MANDRINS A FORT SERRAGE AVEC ATTACHEMENT POLYGONALE  
MANDRINI FORTE SERRAGGIO CON ATTACCO POLIGONALE  
多边形强力铣夹头



Code N.	Shank	D1	D	d	L	G6,3 8000
C50H75C20	C50	50	54	20	7	•
C63H80C20	C63	63	54	20	80	•
C63H100C32	C63	63	72	32	100	•
C80H75C20	C80	80	54	20	75	•
C80H95C32	C80	80	72	32	95	•



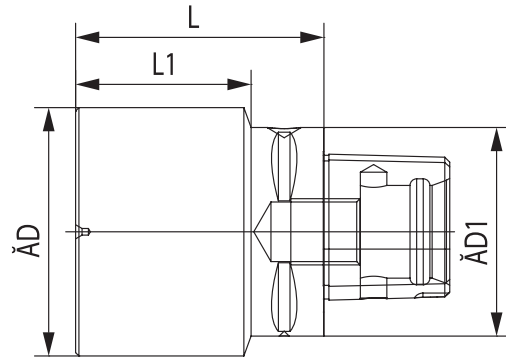
INKLUSIVE SPANNSCHLÜSSEL • SUPPLIED WITH WRENCH • ПОСТАВЛЯЕТСЯ С КЛЮЧОМ  
CLÉ INCLUSE • FORNITI CON CHIAVE INCLUSA • 供货时提供扳手

Zubehör  
Accessories  
Accessoires  
Accessori  
Принадлежности  
零件



POLYGONSCHAFT-ROHLING  
POLYGONAL BLANK TOOLHOLDER  
ЗАГОТОВКА С ПОЛИГОНАЛЬНЫМ ХВОСТОВИКОМ

SEMI-FINIES AVEC ATTACHEMENT POLYGONALE  
MANDRINO A STELO TENERO CON ATTACCO POLIGONALE  
多边形空白刀柄

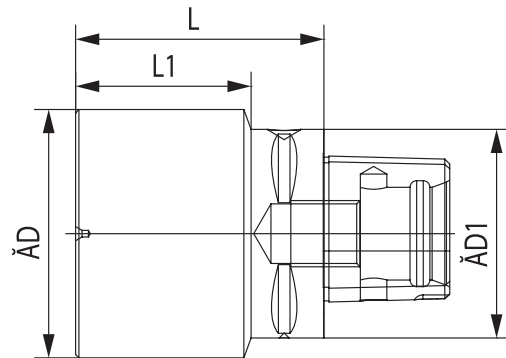


### HRC26-28

Code N.	Attacco Shank	D1	D	L	L1
C40H165D63	C40	40	63	165	145
C50H150D50	C50	50	50	150	130
C50H150D91	C50	50	91	150	130
C63H180D63	C63	63	63	180	158
C63H100D115	C63	63	115	100	78
C63H75D91	C63	63	91	75	53
C80H200D80	C80	80	80	200	170
C80H140D110	C80	80	110	140	110
C80H160D115	C80	80	115	160	130

POLYGONSCHAFT-ROHLING  
POLYGONAL BLANK TOOLHOLDER  
ЗАГОТОВКА С ПОЛИГОНАЛЬНЫМ ХВОСТОВИКОМ

SEMI-FINIES AVEC ATTACHEMENT POLYGONALE  
MANDRINO A STELO TENERO CON ATTACCO POLIGONALE  
多边形空白刀柄

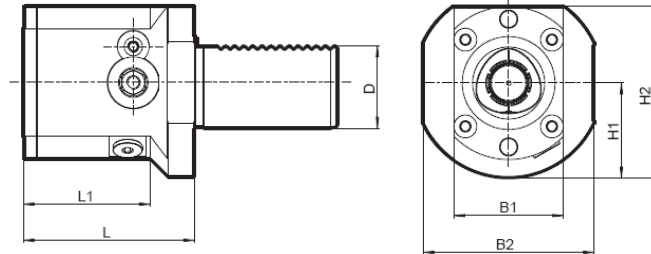


### HRC42

Code N.	Attacco Shank	D1	D	L	L1
C40H165D63-HRC42	C40	40	63	165	145
C50H150D50-HRC42	C50	50	50	150	130
C63H180D63-HRC42	C63	63	63	180	158
C80H200D80-HRC42	C80	80	80	200	170

AXIAL WERKZEUGHALTER MIT POLYGONSCHAFT KUPPLUNG  
 AXIAL TOOLHOLDER WITH POLYGONAL COUPLING  
 ДЕРЖАТЕЛИ ИНСТРУМЕНТА С ХВОСТОВИКОМ HSK ОСЕВЫЕ

PORTE-OUTIL AXIAL AVEC ATTACHEMENT POLYGONALE  
 PORTAUTENSILE ASSIALE PER UTENSILI CON ATTACCO POLIGONALE  
 多边形耦合轴向刀柄



Code N.	Attacco Shank	L	L1	D	B1	B2	H1	H2
VDI40L75C40R/L	C40	75	56	40	48	75	41	75
VDI40L85C50R/L	C50	85	72	40	64	75	41	83
VDI40L109C63R/L	C63	109	109	40	84	84	52	104
VDI50L85C50R/L	C50	85	62	50	64	83	49	91
VDI50L105C63R/L	C63	105	105	50	84	84	52	104
VDI60L95C63R/L	C63	95	59	60	84	84	58	111

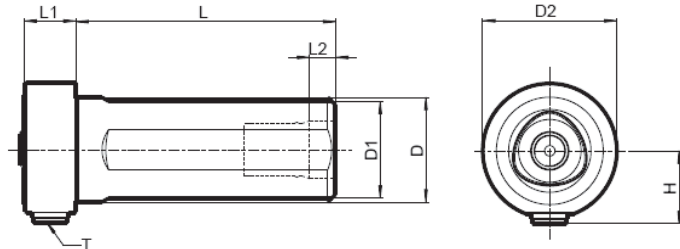
INKLUSIVE SPANNSCHLÜSSEL • SUPPLIED WITH WRENCH • ПОСТАВЛЯЕТСЯ С КЛЮЧОМ  
 CLÉ INCLUSE • FORNITI CON CHIAVE INCLUSA • 供货时提供扳手

Zubehör  
 Accessories  
 Accessoires  
 Accessori  
 Принадлежности  
 零件



WERKZEUGHALTER MIT ZYLINDRISCHEM SCHAFT  
UND MIT POLYGONSCHAFT KUPPLUNG  
TOOLHOLDER WITH CYLINDRICAL SHANK  
AND WITH POLYGONAL ATTACHMENT  
ДЕРЖАТЕЛИ С ЦИЛИНДРИЧЕСКИМ ХВОСТОВИКОМ  
ДЛЯ ИНСТРУМЕНТА С ХВОСТОВИКОМ HSK

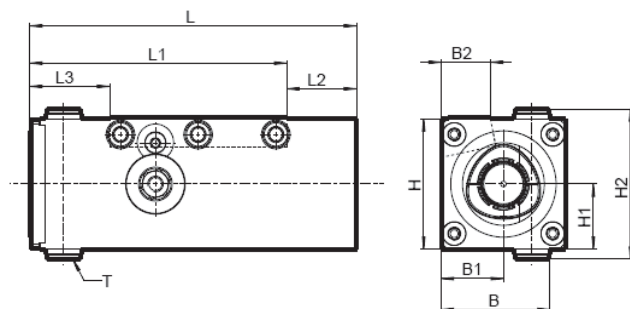
PORTE-OUTIL AVEC QUEUE CYLINDRIQUE  
ET AVEC ATTACHEMENT POLYGONALE  
PORTAUTENSILE A STELO CILINDRICO  
CON ATTACCO POLIGONALE  
带多边形接口的圆柱杆刀柄



Code N.	Attacco Shank	L	L1	L2	D	D1	H	T
D40L100C40	C40	100	20	10	40	37	28	1/8 G
D50L120C50	C50	120	24	20	50	47	33	1/8 G

WERKZEUGHALTER MIT VIERECKIGEM SCHAFT  
UND MIT POLYGONSCHAFT KUPPLUNG  
TOOLHOLDER WITH SQUARE SHANK  
AND WITH POLYGONAL ATTACHMENT  
ДЕРЖАТЕЛИ С ПРИЗМАТИЧЕСКИМ ХВОСТОВИКОМ  
ДЛЯ ИНСТРУМЕНТА С ХВОСТОВИКОМ HSK

PORTE-OUTIL AVEC QUEUE CARÉE  
ET AVEC ATTACHEMENT POLYGONALE  
PORTAUTENSILE A STELO QUADRO  
CON ATTACCO POLIGONALE  
带多边形接口的方杆刀柄

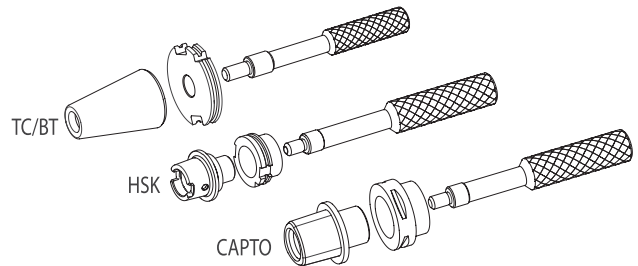
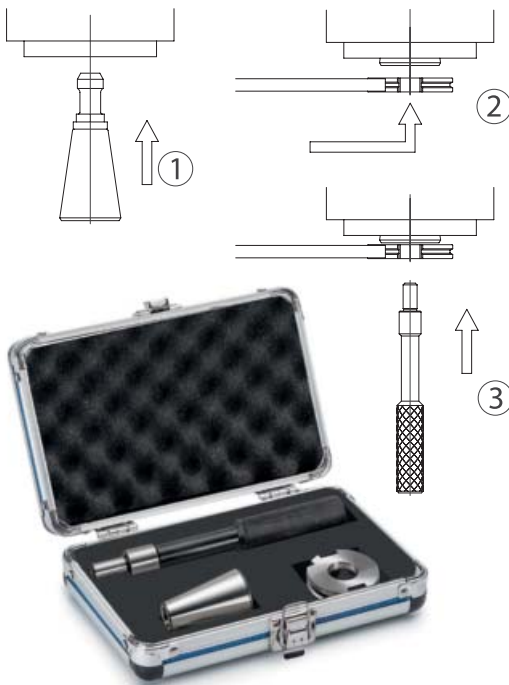


Code N.	Misura	L	L1	L2	L3	B	B1	B2	H	H1	H2	T
Q50L125C40R/L	C40	125	100	25	31	42	24	19	50	25	57,5	G 1/8
Q63L145C50R/L	C50	145	118	27	36	64	32	32	64	32	68	G 1/8

POSITIONSPRÜFUNG DES WERKZEUGWECHSLERS  
POSITIONING CONTROL OF THE TOOL CHANGER ARM  
ПРИБОР ДЛЯ КОНТРОЛЯ ПОЗИЦИОНИРОВАНИЯ  
ЗАХВАТЧИКА ДЛЯ СМЕНЫ ИНСТРУМЕНТА

CONTROLE DU POSITIONNEMENT DU BRAS CHANGEUR D'OUTIL  
CONTROLLO POSIZIONE BRACETTO CAMBIO UTENSILE  
刀具更换臂的定位装置

Code	Cone
KIT.PRUEFD-TC40	TC40
KIT.PRUEFD-TC50	TC50
KIT.PRUEFD-BT40	BT40
KIT.PRUEFD-BT50	BT50
KIT.PRUEFD-H40A	HSK40A
KIT.PRUEFD-H50A	HSK50A
KIT.PRUEFD-H63A	HSK63A
KIT.PRUEFD-H100A	HSK100A
KIT.PRUEFD-C4	C40
KIT.PRUEFD-C5	C50
KIT.PRUEFD-C6	C63



- 1 After assembling the usual pull stud, insert the cone into the spindle manually.
- 2 Set up the flange into the tool changer arm and go closer to the spindle.
- 3 After positioning, try to insert the double-diameter control pin between the two pieces. Adjust the arm accordingly until you get the perfect coaxiality so that the control bar enters the flange and the cone holes with no interferences.



- 1 Nach der Montage der üblichen Anzugsbolzen spannen Sie die Aufnahme manuell in die Spindel.
- 2 Spannen Sie den Flansch in den Werkzeugwechsler Arm und gehen Sie näher an der Spindel.
- 3 Nach der Positionierung versuchen Sie, die Doppel-Durchmesser-Prüfdorne zwischen den beiden Stücken einzusetzen. Stellen Sie den Arm entsprechend ein, bis Sie die perfekte Rundlaufgenauigkeit bekommen, wenn die Dorne in die Bohrungen des Flansches und der Aufnahme ohne Übermaß hineingeht.



- 1 После установки штрелева, вставить вручную конус в шпиндель
- 2 Установить фланец в устройство для автоматической смены инструмента
- 3 После установки, вставить двухдиаметровый штифт управления между двумя частями. Отрегулировать устройство для автоматической смены инструмента до идеальной соосности.



- 1 Après le montage de la tirette, insérez manuellement le cône dans le mandrin de la machine.
- 2 Montez la bride dans le bras changeur d'outil et rapprochez de la machine.
- 3 Après le positionnement, essayez d'insérer la barre de contrôle à double diamètre entre les deux pièces. Ajustez le bras en conséquence jusqu'à ce que vous obtenez la coaxialité parfaite quand la barre entre sans interférences dans les trous de la bride et du cône.



- 1 Inserire manualmente il cono nel mandrino della macchina, dopo aver montato il codolo normalmente usato.
- 2 Montare la flangia nel braccetto cambia utensile ed avvicinarsi al naso macchina.
- 3 Una volta in posizione provare ad inserire la spina di controllo a doppio diametro tra i 2 pezzi. Regolare di conseguenza il braccetto cambia utensile fino a raggiungere la perfetta coassialità quando la spina entra senza interferenze nei fori della flangia e del cono.

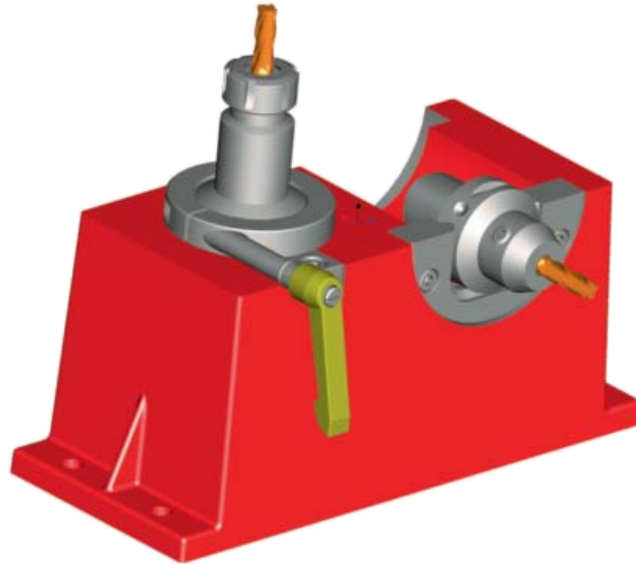


- 1 给接头装上拉钉后，手动将接头插入设备的轴上
- 2 将法兰装到刀具更换臂上并靠近机器设备的轴
- 3 对好位置后，设法将双径控制销插入法兰和接头中。相应调整更换臂的位置至更换臂没有间隙地插入法兰孔和接头直至得到完美的精度



MONTAGEBLOCK  
ASSEMBLY SUPPORTS  
СТОЙКА ДЛЯ СБОРКИ ИНСТРУМЕНТА

SUPPORTS D'ASSEMBLAGE  
SUPPORTO DI MONTAGGIO  
组件支架



Attack	Code N
C30	237-33110
C40	237-33210
C50	237-33310
C60	237-33410
C80	237-33510
C100	237-33610

Dieses unkompliziertes System erlaubt die schnelle und sichere Montage und Demontage von Steilkegelaufnahmen in horizontaler und vertikaler Lage. Das Risiko der Werkzeugbeschädigung ist ausgeschlossen. Es eignet sich natürlich auch für modulare Din-Aufnahmen.

It is very useful for all assembly and disassembly operations of the tools on the toolholders, either in horizontal or in vertical position. This process is carried out without any risk to damage casually the tool or the toolholder. It is a very simple system suitable for Din toolholders.

Приспособление очень удобно для операций сборки и демонтажа инструмента, как в вертикальном, так и в горизонтальном положении. Оно позволяет избежать повреждения оправок или режущего инструмента. Это простое приспособление подходит для монолитных оправок.

Il permet d'effectuer toutes les opérations de montage /assemblage/ demontage des outils sur les Mandrins. Ces proces se déroulent avec rationalité, sureté, vitesse et sans aucun risque d'endommagement accidentel du mandrin ou de l'outil. C'est un système qui vous offre la plus haute simplicité d'usage et il est bien indiqué pour les Din mandrin.

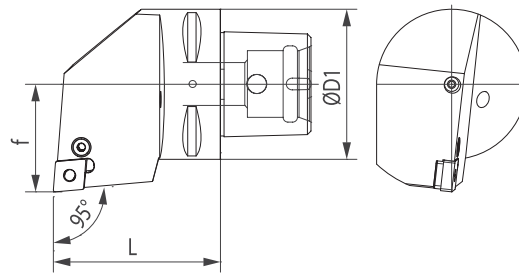
Consente di effettuare tutte le operazioni di montaggio e smontaggio degli utensili sui mandrini, sia in orizzontale che in verticale. Questi procedimenti avvengono con razionalità, sicurezza, rapidità e senza alcun rischio di danneggiare o il mandrino o l'utensile. E' il sistema che offre la massima semplicità d'uso per i mandrini Poligonali.

它对于所有将工具以垂直或水平方向安装在刀柄上和从刀柄上拆除，均非常有用。这一过程的执行不会对工具或刀柄产生任何破坏的风险。这一非常简单的系统适用于整体式刀柄。

KLEMMHALTER MIT POLYGONSCHAFT  
POLYGONAL TURNING TOOL  
ДЕРЖАВКА ДЛЯ НАРУЖНОГО ТОЧЕНИЯ DIN

PORTE-OUTIL AVEC ATTACHEMENT POLYGONALE  
UTENSILE TORNITURA CON ATTACCO POLIGONALE  
多边形车刀

PCLN

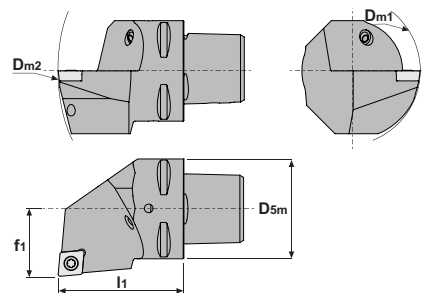


Code N.	Attacco Shank	D1 mm	f mm	L mm	Insert
C63-PCLNR/L12	C63	63	45	65	CN..1204..

KLEMMHALTER MIT POLYGONSCHAFT  
POLYGONAL TURNING TOOL  
ДЕРЖАВКА ДЛЯ НАРУЖНОГО ТОЧЕНИЯ DIN

PORTE-OUTIL AVEC ATTACHEMENT POLYGONALE  
UTENSILE TORNITURA CON ATTACCO POLIGONALE  
多边形车刀

SCLC

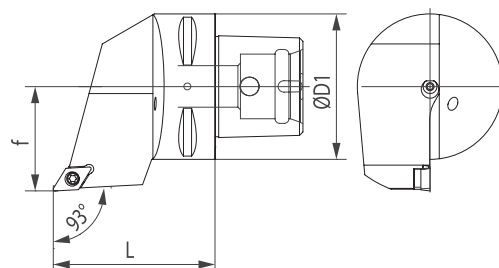


Code N.	Attacco Shank	l1 mm	f1 mm	Insert
C50-SCLCR/L09	50	60	35	CC..09T3..
C63-SCLCR/L09	63	65	45	CC..09T3..
C63-SCLCR/L12	63	65	45	CC..1204..

KLEMMHALTER MIT POLYGONSCHAFT  
POLYGONAL TURNING TOOL  
ДЕРЖАВКА ДЛЯ НАРУЖНОГО ТОЧЕНИЯ DIN

PORTE-OUTIL AVEC ATTACHEMENT POLYGONALE  
UTENSILE TORNITURA CON ATTACCO POLIGONALE  
多边形车刀

SDJC

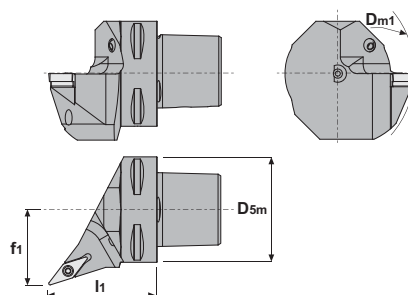


Code N.	Attacco Shank	D1 mm	f mm	L mm	Insert
C63-SDJCR/L11	C63	63	45	65	DC..11T3..

KLEMMHALTER MIT POLYGONSCHAFT  
POLYGONAL TURNING TOOL  
ДЕРЖАВКА ДЛЯ НАРУЖНОГО ТОЧЕНИЯ DIN

PORTE-OUTIL AVEC ATTACHEMENT POLYGALE  
UTENSILE TORNITURA CON ATTACCO POLIGONALE  
多边形车刀

SVHB

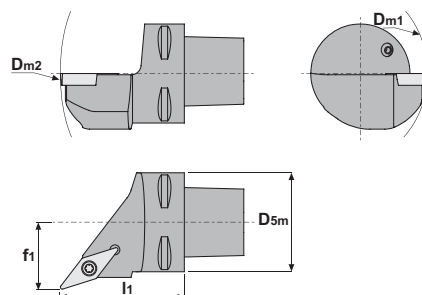


Code N.	Attacco Shank	l1 mm	f1 mm	Insert
C63-SVHBR/L16	63	65	45	VBMT1604..

KLEMMHALTER MIT POLYGONSCHAFT  
POLYGONAL TURNING TOOL  
ДЕРЖАВКА ДЛЯ НАРУЖНОГО ТОЧЕНИЯ DIN

PORTE-OUTIL AVEC ATTACHEMENT POLYGALE  
UTENSILE TORNITURA CON ATTACCO POLIGONALE  
多边形车刀

SVHC

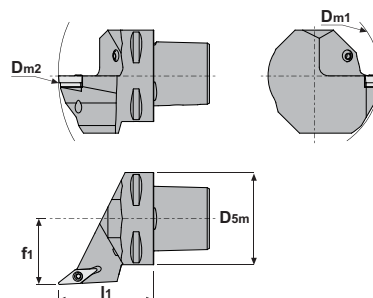


Code N.	Attacco Shank	l1 mm	f1 mm	Insert
C63-SVHCR/L16	63	65	45	VCMT1604..

KLEMMHALTER MIT POLYGONSCHAFT  
POLYGONAL TURNING TOOL  
ДЕРЖАВКА ДЛЯ НАРУЖНОГО ТОЧЕНИЯ DIN

PORTE-OUTIL AVEC ATTACHEMENT POLYGALE  
UTENSILE TORNITURA CON ATTACCO POLIGONALE  
多边形车刀

SVJB

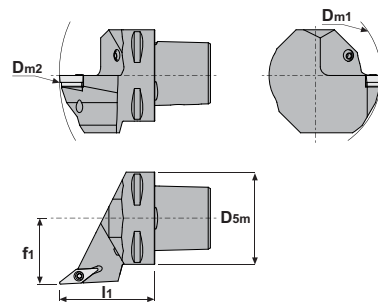


Code N.	Attacco Shank	l1 mm	f1 mm	Insert
C63-SVJBR/L16	63	65	45	VBMT1604..

KLEMMHALTER MIT POLYGONSCHAFT  
POLYGONAL TURNING TOOL  
ДЕРЖАВКА ДЛЯ НАРУЖНОГО ТОЧЕНИЯ DIN

PORTE-OUTIL AVEC ATTACHEMENT POLYGONALE  
UTENSILE TORNITURA CON ATTACCO POLIGONALE  
多边形车刀

SVJC

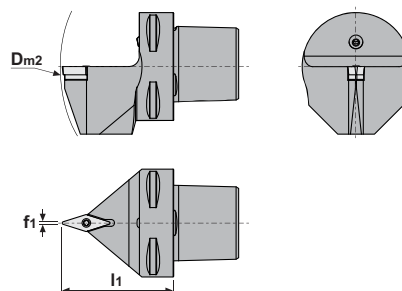


Code N.	Attacco Shank	l1 mm	f1 mm	Insert
C63-SVJCR/L16	63	65	45	VCMT1604..

KLEMMHALTER MIT POLYGONSCHAFT  
POLYGONAL TURNING TOOL  
ДЕРЖАВКА ДЛЯ НАРУЖНОГО ТОЧЕНИЯ DIN

PORTE-OUTIL AVEC ATTACHEMENT POLYGONALE  
UTENSILE TORNITURA CON ATTACCO POLIGONALE  
多边形车刀

SVVC

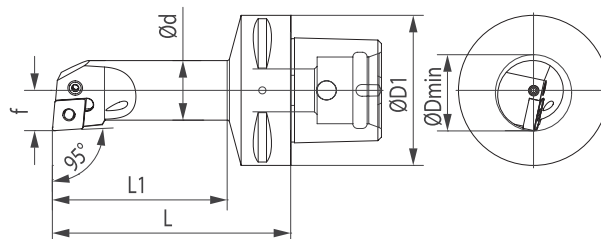


Code N.	Attacco Shank	f1 mm	l1 mm	D2	Insert
C63-SVVCN16-190	63	0,6	65	190	VCMT1604..

KLEMMHALTER MIT POLYGONSCHAFT  
POLYGONAL TURNING TOOL  
ДЕРЖАВКА ДЛЯ НАРУЖНОГО ТОЧЕНИЯ DIN

PORTE-OUTIL AVEC ATTACHEMENT POLYGONALE  
UTENSILE TORNITURA CON ATTACCO POLIGONALE  
多边形车刀

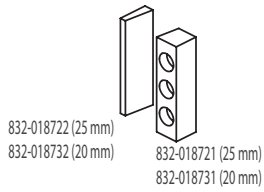
PCLN



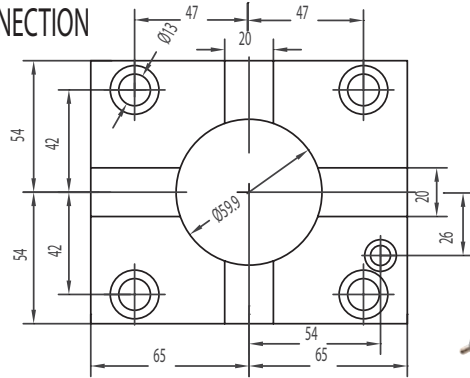
Code N.	Attacco Shank	D min mm	D1 mm	f mm	L mm	L3 mm	d mm	Insert
C63-25PCLNR/L12	C63	32	63	17	100	74	25	CN..1204..
C63-32PCLNR/L12	C63	40	32	22	110	84	32	CN..1204..

## DMG MORI (BMT60)

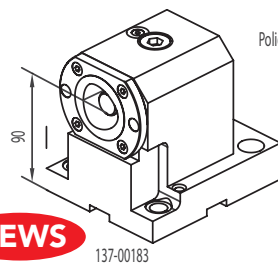
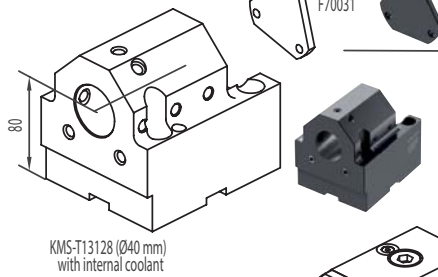
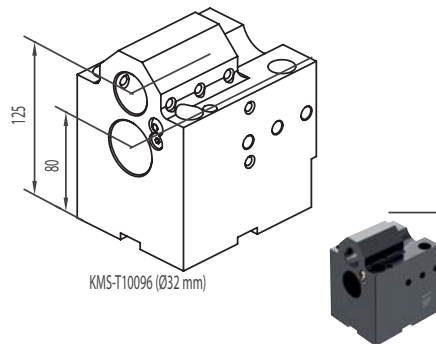
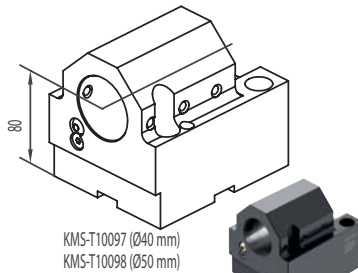
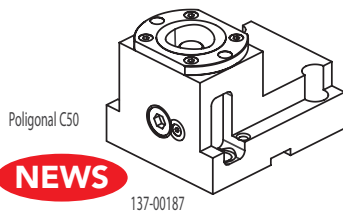
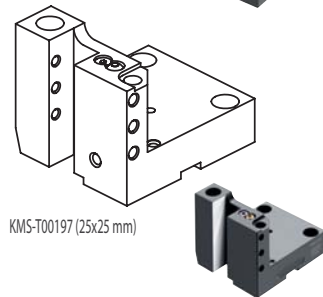
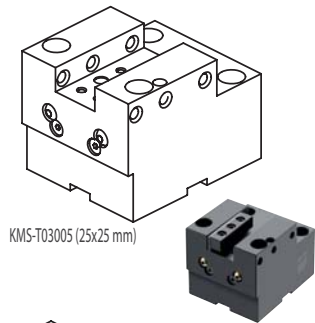
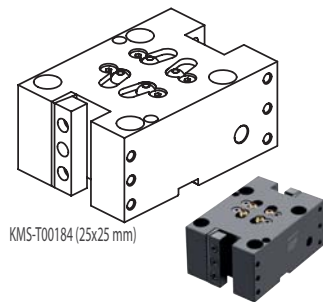
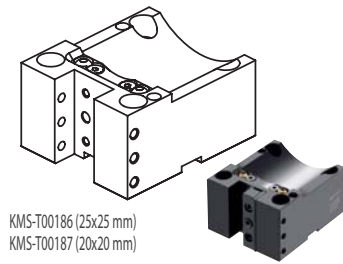
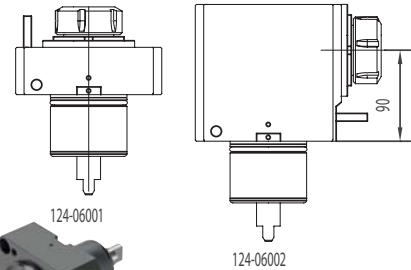
**NLX1500 - NLX2000  
NLX2500 - NLX3000  
NL2000 (S)MC - 2500 (S)MC  
NL3000MC (12 STATIONS)**



### CONNECTION



### Driven tools



### ACCESSORIES

- KMS-T20098-A (Ø32 mm)
- KMS-T20096-A (Ø25 mm)
- KMS-T20094-A (Ø20 mm)
- KMS-T20092-A (Ø16 mm)
- KMS-T20090-A (Ø12 mm)
- KMS-T20088-A (Ø10 mm)
- KMS-T20086-A (Ø8 mm)

- KMS-T20196-A (Ø20 mm)
- KMS-T20194-A (Ø16 mm)
- KMS-T20110-A (Ø12 mm)
- KMS-T20108-A (Ø10 mm)
- KMS-T20106-A (Ø8 mm)

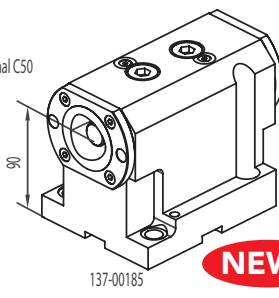
- KMS-T22042-A (MT3)
- KMS-T22044-A (MT4)
- KMS-T22046-A (MT2)
- KMS-T22066-A (MT1)

- KMS-T20188 (Ø20 mm)
- KMS-T20186 (Ø16 mm)
- KMS-T20184 (Ø12 mm)
- KMS-T20182 (Ø10 mm)
- KMS-T20180 (Ø8 mm)

- KMS-T20122-A (Ø25 mm)
- KMS-T20120-A (Ø20 mm)
- KMS-T20118-A (Ø16 mm)
- KMS-T20116-A (Ø12 mm)
- KMS-T20114-A (Ø10 mm)
- KMS-T20112-A (Ø8 mm)

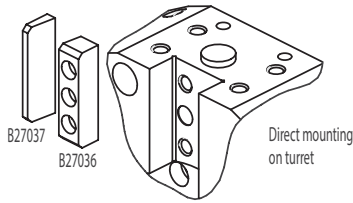
- KMS-T20100-A (Ø32 mm)
- KMS-T20102-A (Ø25 mm)
- KMS-T20104-A (Ø20 mm)
- KMS-T20190-A (Ø16 mm)

Poligonal C50

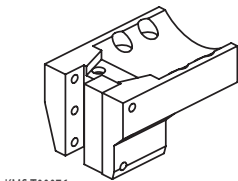


# DMG MORI CMZ

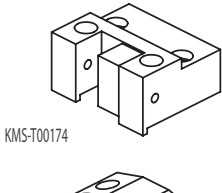
SL203MC - SL253MC - ZL200MC  
ZL250SMC - SL204SMC - SL300MC  
TL20 - TL25 - TC30 - TC35



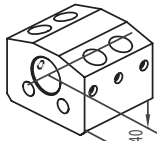
Direct mounting on turret



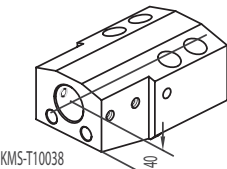
KMS-T00076



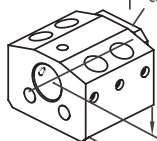
KMS-T00174



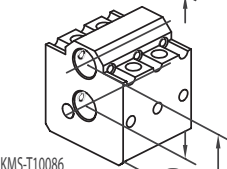
KMS-T10036 (Ø40 mm)  
KMS-T10044 (Ø50 mm)



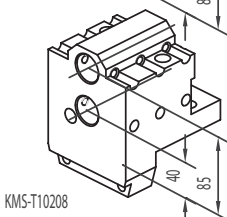
KMS-T10038



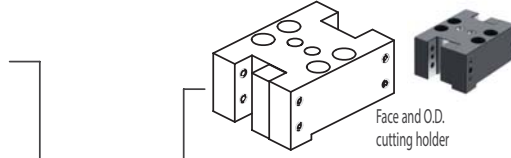
KMS-T13064



KMS-T10086

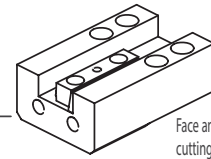


KMS-T10208



Face and O.D. cutting holder

Qualified tool 25x25 mm

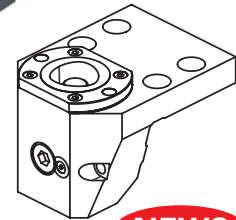


Face and I.D. cutting holder



Cut-off holder

KMS-T00156

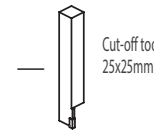


Face and O.D. cutting holder

Polygonal C50

128-12513

**NEWS**



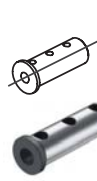
Cut-off tool 25x25mm

## ACCESSORIES



Drill socket

KMS-T22042 <MT3>  
KMS-T22044 (for Ø50 mm) <MT4>  
KMS-T22046 <MT2>



Boring bar sleeve

KMS-T20098 (Ø32 mm)  
KMS-T20096 (Ø25 mm)  
KMS-T20094 (Ø20 mm)  
KMS-T20092 (Ø16 mm)  
KMS-T20090 (Ø12 mm)  
KMS-T20088 (Ø10 mm)  
KMS-T20086 (Ø8 mm)



Throw-away drill socket

KMS-T20100 (Ø32 mm)  
KMS-T20102 (Ø25 mm)  
KMS-T20104 (Ø20 mm)  
KMS-T20190 (Ø16 mm)



Boring bar sleeve

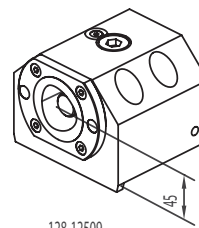
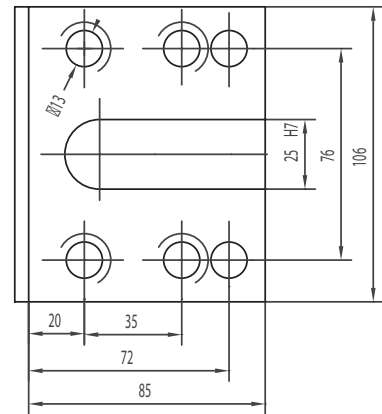
KMS-T20122 (Ø25 mm)  
KMS-T20120 (Ø20 mm)  
KMS-T20118 (Ø16 mm)  
KMS-T20116 (Ø12 mm)  
KMS-T20114 (Ø10 mm)  
KMS-T20112 (Ø8 mm)



Drill socket

KMS-T22048 <MT2>  
KMS-T22050 <MT1>

## CONNECTION



Boring bar holder  
Polygonal C50

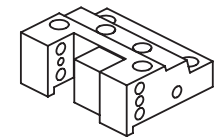
128-12509

**NEWS**



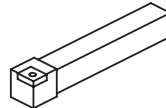
### OKUMA LB15 - LB25 LB15II - LB300

### HAAS SL20 - SL30

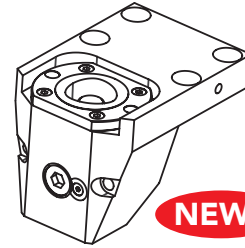


128-42011

Face and O.D.  
cutting holder



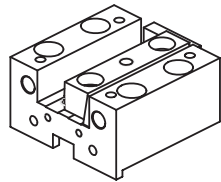
Qualified tool  
25x25 mm



128-12059

Face and O.D.  
cutting holder  
Polygonal C50

**NEWS**

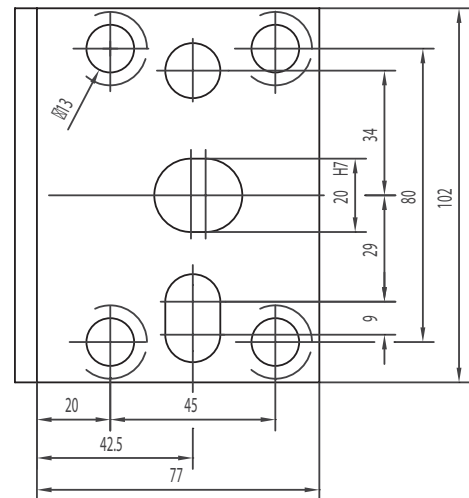


128-32001

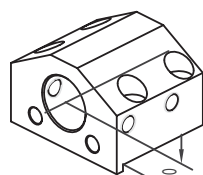
Face and I.D.  
cutting holder



### CONNECTION

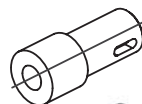
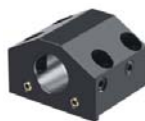


### ACCESSORIES



128-22001

Toolholder  
for boring bar



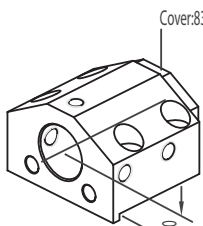
Drill socket

- 165-64010 <MT1>
- 165-64011 <MT2>
- 165-64012 <MT3>



Boring bar sleeve and  
throw-away drill socket

- 165-64013 (Ø10 mm)
- 165-64014 (Ø12 mm)
- 165-64015 (Ø16 mm)
- 165-64016 (Ø20 mm)



128-22005

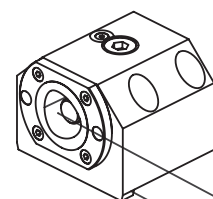
Cover:832-003056

Combi toolholder  
for boring bar and  
insertdrill with internal  
coolant



Boring bar sleeve and  
throw-away drill socket

- 165-64017 (Ø25 mm)
- 165-64018 (Ø32 mm)

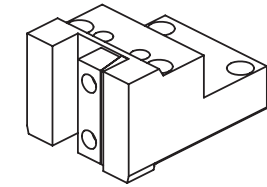


128-12057

Boring bar holder  
Polygonal C50

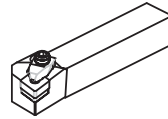
**NEWS**

**OKUMA** LB4000 EX (M, MY)

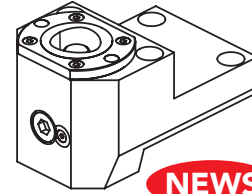


128-41508

Face and O.D. cutting holder



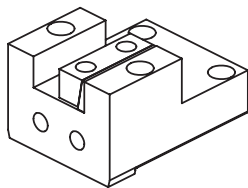
Qualified tool  
25x25 mm



128-11562

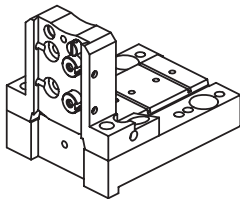
Face and O.D. cutting holder  
Polygonal C50

**NEWS**



128-31504

Face and I.D. cutting holder



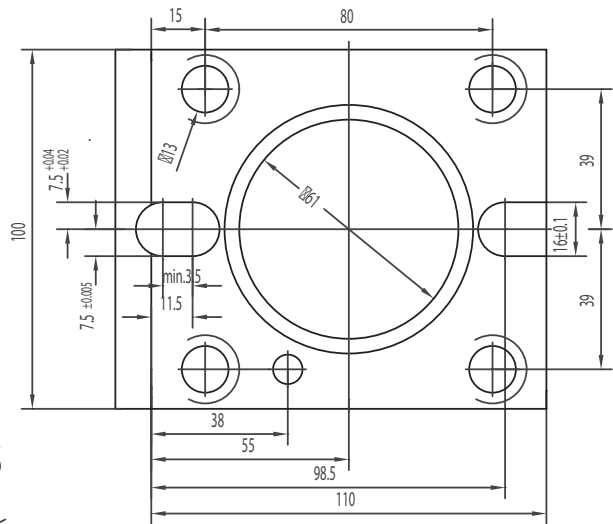
128-11536

Cut-off holder

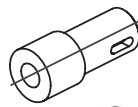


Cut-off tool  
32 mm

**CONNECTION**



**ACCESSORIES**



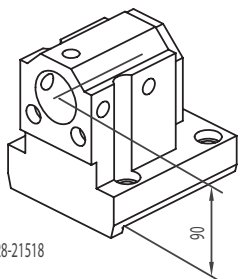
Drill socket

- 165-64010 <MT1>
- 165-64011 <MT2>
- 165-64012 <MT3>



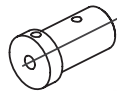
Boring bar sleeve

- 165-64135 (Ø8 mm)
- 165-64013 (Ø10 mm)
- 165-64014 (Ø12 mm)
- 165-64015 (Ø16 mm)
- 165-64016 (Ø20 mm)



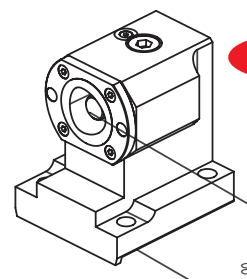
128-21518

Combi toolholder for boring bar and insertdrill  
Ø40 mm



Throw-away drill socket

- 165-64203 (Ø16 mm)
- 165-64204 (Ø20 mm)
- 165-64205 (Ø25 mm)
- 165-64206 (Ø32 mm)



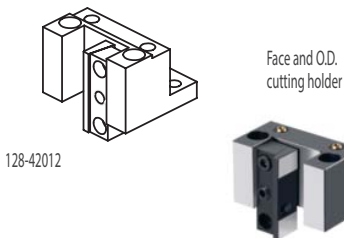
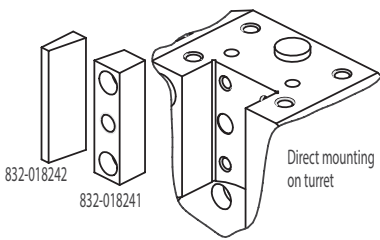
128-11560

**NEWS**

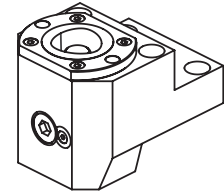
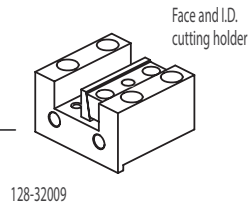
Boring bar holder  
Polygonal C50

90

### DOOSAN PUMA 230S - 240S - LYNX210



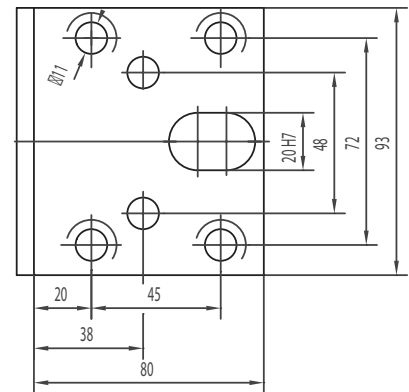
Qualified tool  
25x25 mm



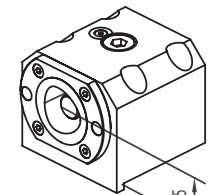
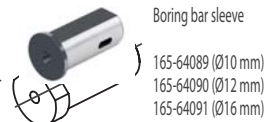
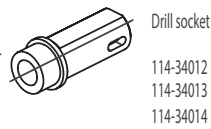
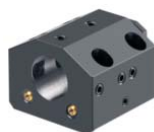
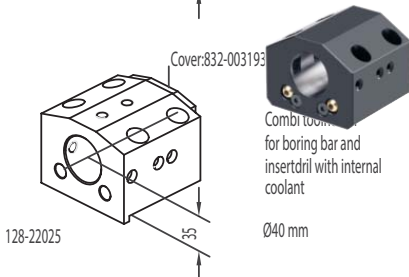
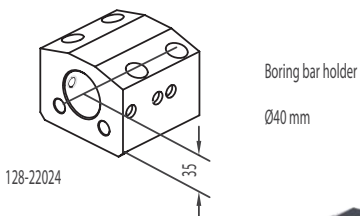
Poligonal C50

**NEWS**

#### CONNECTION



#### ACCESSORIES

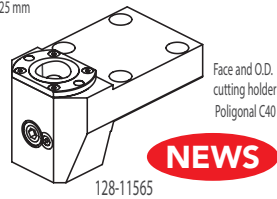
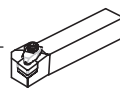
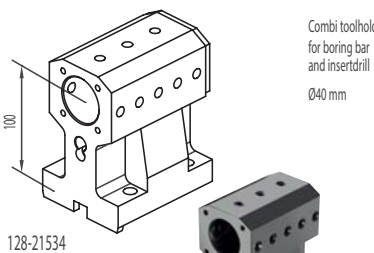
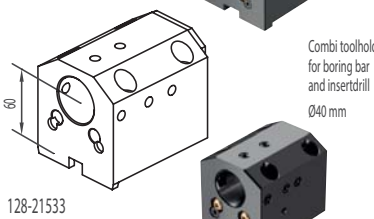
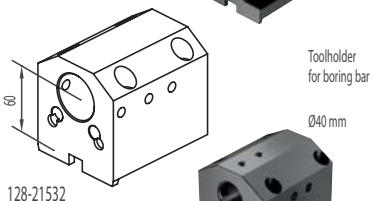
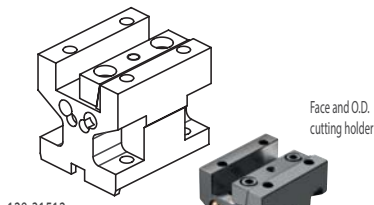
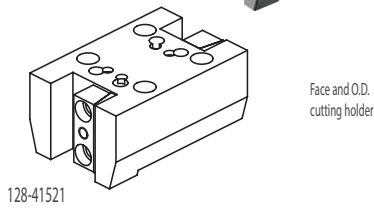
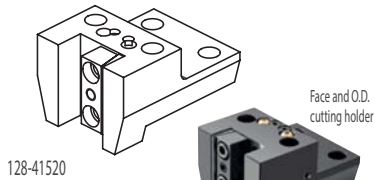


**NEWS**

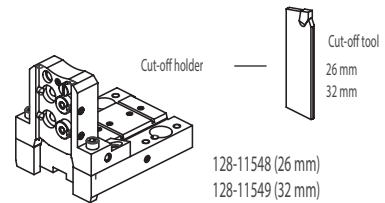
**DOOSAN**  
(BMT55)

**DOOSAN**  
(BMT55)

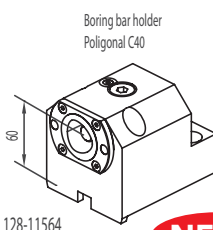
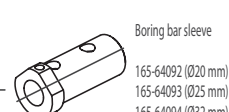
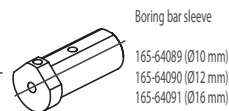
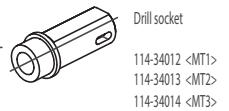
**PUMA 230-240M/MS - 280LM - 1500-2000-2500M/MS/Y/SY**  
**2100 SERIE - TT1500-TT1800MS/SY**  
**TL2000-2500LM - MX1600/2100TS**  
**LYNX 300M**



**NEWS**

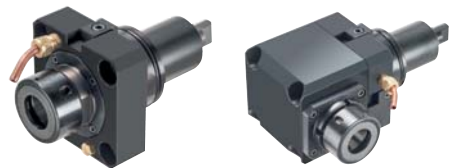
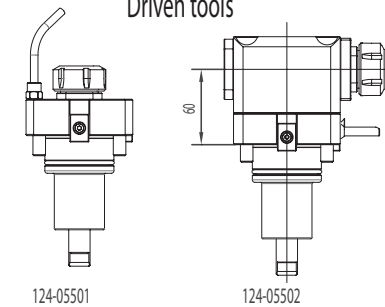


**ACCESSORIES**

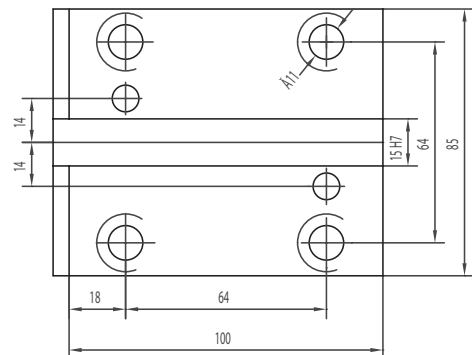


**NEWS**

**Driven tools**



**CONNECTION**



### DOOSAN PUMA (BMT65)

300M/MS - V400M - TT2000SY - TT2500SY  
TT2500MS - 2600/3100 SERIE  
MX2000ST - MX2500T/ST/LST - VT450/TM  
INVERTURN 300M

**Face and O.D. cutting holder**

128-41801

128-41802

128-31802

128-21801

128-21802

128-21803

128-11805

128-11807

Qualified tool 25x25 mm

128-11809

**NEWS**

**Face and O.D. cutting holder**

128-41803

**Face and O.D. cutting holder**

128-41804

**Face and O.D. cutting holder**

Poligonal C50

**Face and O.D. cutting holder**

128-11804

Cut-off holder

Cut-off tool 32 mm

**ACCESSORIES**

Toolholder for boring bar  $\varnothing 40$  mm

128-21801

Combi toolholder for boring bar and insertdrill  $\varnothing 40$  mm

128-21802

Combi toolholder for boring bar and insertdrill  $\varnothing 40$  mm

128-21803

Boring bar holder Poligonal C50

128-11805

Boring bar holder double Poligonal C50

128-11807

**NEWS**

**NEWS**

**Driven tools**

124-06501

124-06502

**CONNECTION**

18

$\varnothing 13$

17

17

92

20

70

110

18 H7

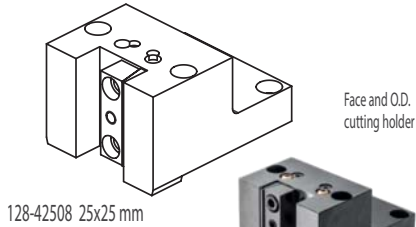
73

95

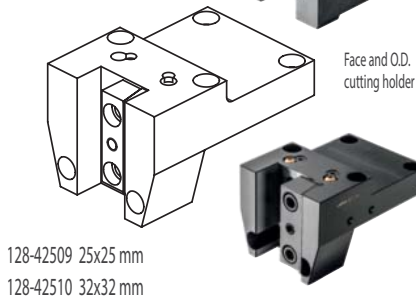
# DOOSAN PUMA (BMT75)

400 - 480M/LM/XLM - VT 750M/TM

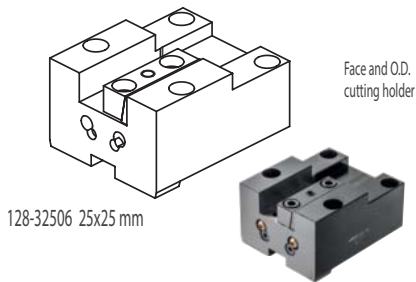
## CONNECTION



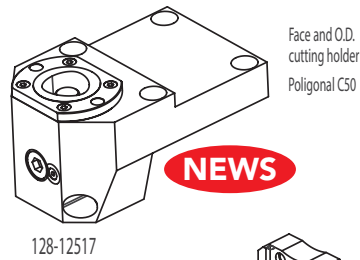
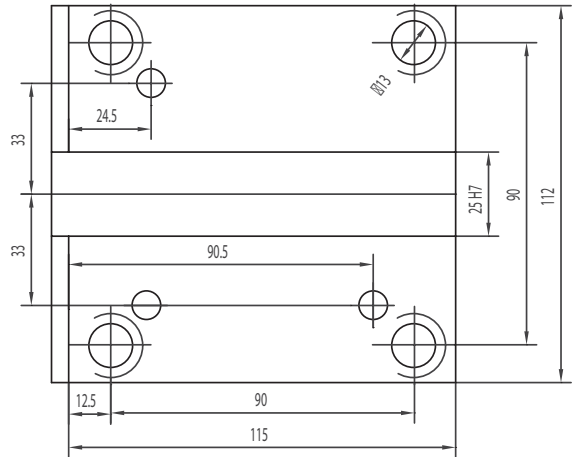
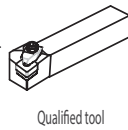
Face and O.D. cutting holder



Face and O.D. cutting holder

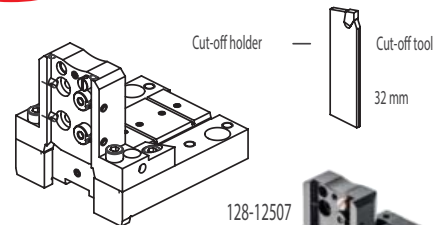


Face and O.D. cutting holder

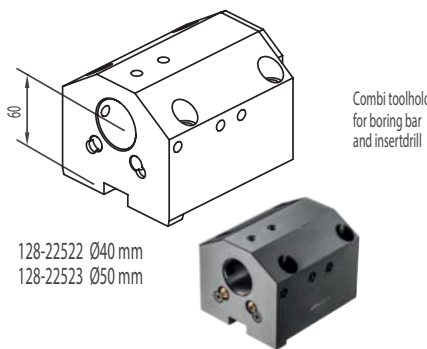


Face and O.D. cutting holder  
Poligonal C50

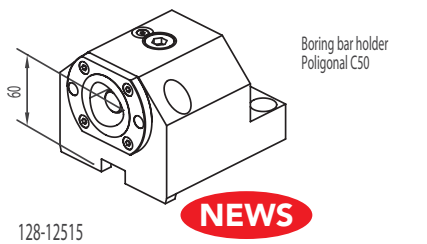
**NEWS**



## ACCESSORIES

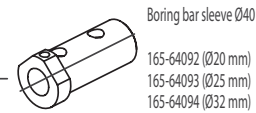
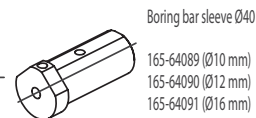
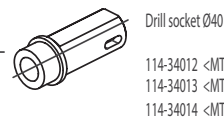


Combi toolholder for boring bar and insertdrill



Boring bar holder  
Poligonal C50

**NEWS**



## Driven tools

